

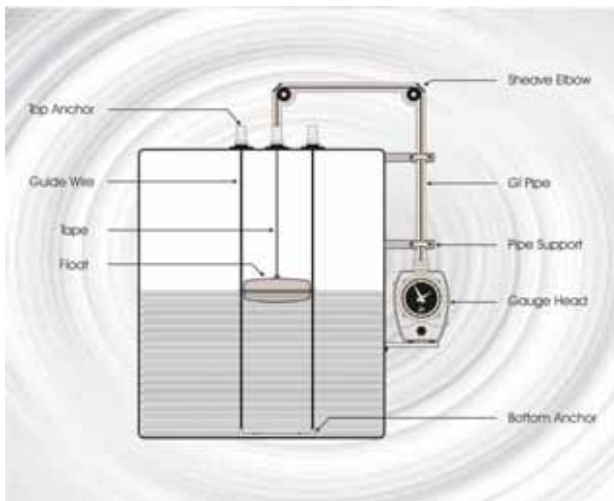
Features

- Float and tape gauge are applicable for upto 50 bar pressure and upto 400 deg cent
- NACE, H2S service compatibility applicable
- Level 1 radiographed body available
- Applicable for refinery, petrochemical, chemical, power, radioactive, fertilizer, food, pharma, metal industry applications
- Options with switch version available

General Float and tape Type level Indicator is the version applicable for level indication system in Water, Furnace oil, Chemicals, Acids storage tank level measurement.

Available in two types:

- Guided Type
- Unguided Type



Float Guidewires

Guidewires provide stability for the float during turbulent conditions and increased accuracy by reducing the horizontal movement of the float across the surface of the product. Accessories are available to allow in-service installations, such as weighted anchors that maintain tension in the guidewires without the need for welding inside the tank.

Tank Gauge Installations:

Float and tape gauging is suitable for almost all product applications and tank types

- Accuracy ± 4 mm upto 25000 mm measuring range with dial size upto 900 mm
- Accuracy ± 2 mm upto 10000 mm measuring range with dial size upto 900 mm
- Least Count 1 mm
- Measuring range 0 to 20 meters with dial / counter (Optional: 0 to 30 meters with counter)
- Suitable for upto 50 kg/cm² pressure
- Suitable for upto 400 deg cent temperature
- Dial size max upto 900 mm and other on special accuracy and demand

It is an economical mechanical gauge provides high accuracy in mm. Largely used in Refineries, Oil Depots, Chemical and Fertilizer Industries. Useful for medium and large size charged or empty tanks. It may be cone roof, floating roof, underground or gas holding tank. It covers critical applications like corrosive & aggressive acids (using non-metallic wetted parts) & liquids with fumes (using vapor seal).

It requires very less maintenance

Once carefully installed gives trouble free operations for a number of years (with periodic maintenance). A specially designed cylindrical body floats on liquid surface on account of its buoyancy. The liquid level is transmitted by means of a tape connected to float on one side and gear mechanism on the other side. Gears rotate the pointer on a dial or counter mechanism to display readings. A drum and spring mechanism provides constant tension on tape to keep it straight and thus balancing the force due to apparent float weight on one side and spring tension on other side.

Ordering Text (sample shown)

Type of Level Gauge				
FBI/G	Guided Type			
FBI/U	Unguided Type			
MOC of Float				
S4	SS304	S6	SS316	
MOC of Wire				
S4	SS304	S6	SS316	
Process Connection - Flanged in CS				
Code	Size	Code	Code	Size
15	1/2	F	150	150#RF
20	3/4			
25	1			
40	1 1/2			
Range				
XXXX	Indicate the required range in mm.			

Technical Specifications:

MOC of wire (float and guided)	SS316, SS316L, SS304L, PTFE
MOC of float	SS316, SS316L, PP, PTFE, Monel, Titanium, alloy 20
MOC of flange	SS316, SS316L, PP, PTFE, Monel, Titanium, PVDF, alloy 20
MOC of dial counter	Die cast all with anticorrosion powder coat, sheet steel
Dial counter enclosure	IP65
Dial counter ratio	5:1, 10:1, upto 30:1
Max level range	25000 mm
Accuracy	0.5% to 10% depending on the requirements
Dial counter	150mm upto 500mm, other dial size as per requirements of accuracy
Protection conduits MOC	GI, SS304, SS316, SS316L, A106
Dial counter holders	SS316, GI, A106, SS316L
Anchor plates for guide and float wire	SS304, A106, SS316, SS316L, SS304L, Monel, Hastelloy, alloy 20

Special Materials

Standard, moderate, severe and extreme service kits are available for applications involving extreme temperatures, pressures or aggressive products. There kits include material options for specific parts that make contact with the product in the tank, tape piping or gauge head, such as:

- Steel
- Aluminium
- Stainless steel

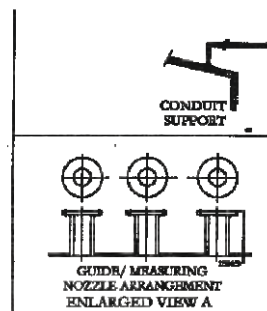
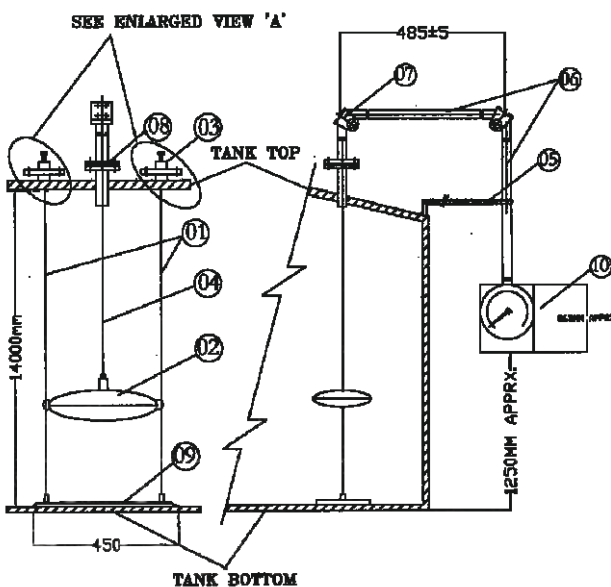
Product Type

Due to the float and tape measurement technique, the following are just some of the products suitable for level measurement using a float and tape device:

- Crudes
- Gasoline
- Jet fuel
- AV (aviation) gas - high octane gas for small aircraft
- Diesel
- Chemicals
- Additives
- Solvents
- Water

G A Drawing Applicable

Indicator system with scale board for long distance viewing and metric dial counter for ground reading purpose



Part List

SR. NO	DESCRIPTION
01	GUIDE WIRE
02	FLOAT (OD-300 MM)
03	GUIDE ROPE TENSION ASSEMBLY
04	FLOAT ROPE
05	CONDUIT SUPPORT
06	PROTECTION LIMB
07	PULLEYS
08	FLANGE
09	ANCHOR PLATE
10	DIAL COUNTER

Features

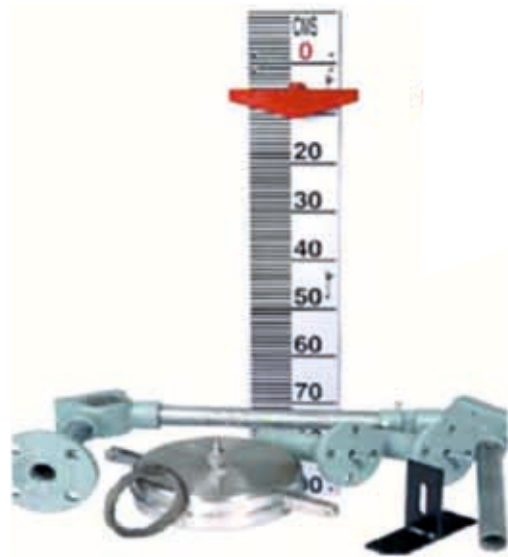
- Float and Board gauge applicable upto 50 kg and upto 400 deg cent
- NACE, H2S service compatibility applicable
- Level 1 radiographed body available
- Applicable for refinery, petrochemical, chemical, power, radioactive, fertilizer, food, pharma, metal industry applications
- Options with switch version available

Concept and Principle of operation

General Float and Board Type level Indicator is the version applicable for level indication system in Water, Furnace oil, Chemicals, Acids storage tank level measurement.

Available in two types:

- Guided Type
- Unguided Type



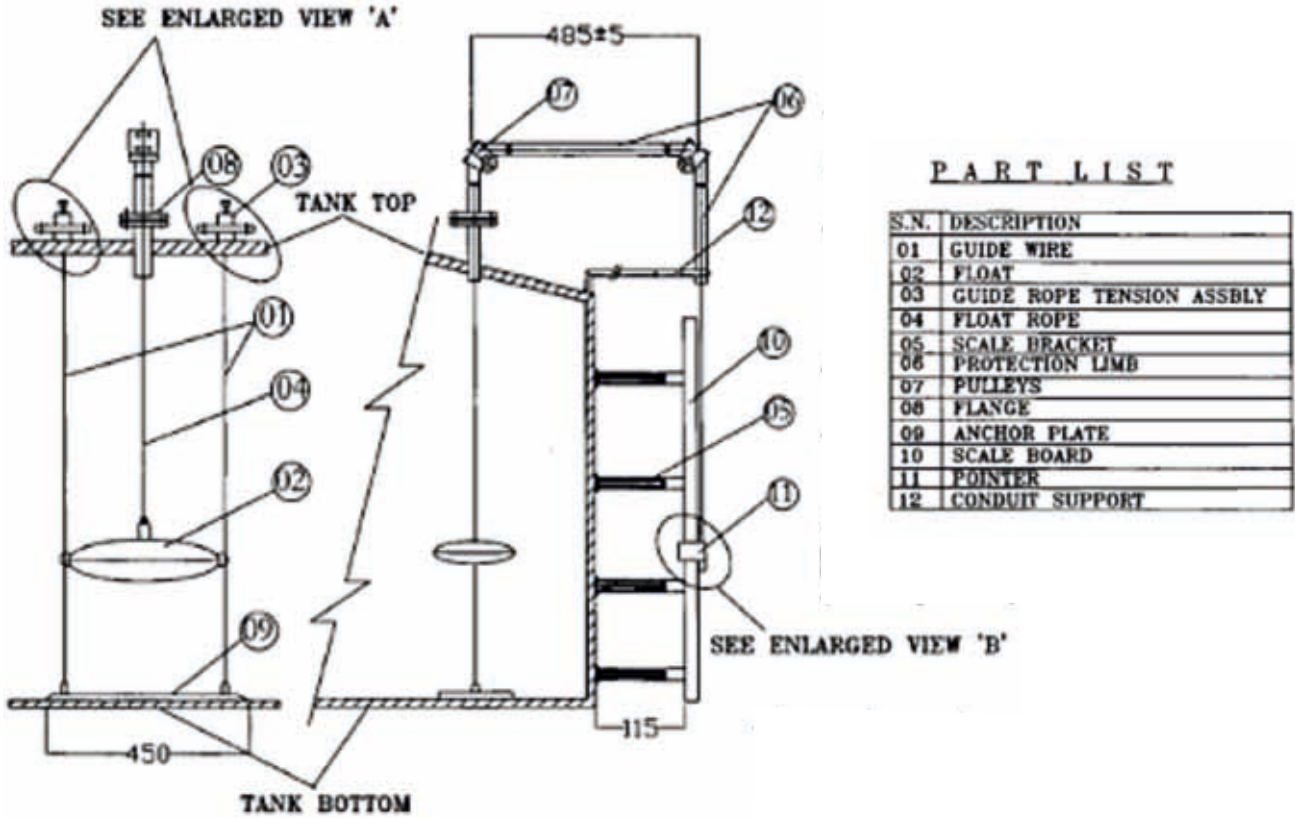
Specifications

Type	Guided Type	Unguided Type
Service	Ground level tank / Underground tank (sump) / Overhead tank	
Mounting Orientation	Top Mounted	
Measuring Range	15000mm	5000mm
Float	SS304 / SS316	
Calibrated Gauge Board	6" wide, Aluminium white powder coating with black graduation and numerals	
Least Count	25mm	
Max. Temp.	upto 400 deg cent	
Max Pressure	upto 50 bar	
Float Wire Rope	Ø1.6mm x SS316 / SS304 (multistrand)	
Guide Wire Rope	Ø1.6mm x SS316 / SS304 (multistrand)	Not Applicable

Ordering Text (Sample)

Type of Level Gauge				
FBI/G	Guided Type			
FBI/U	Unguided Type			
MOC of Float				
SS316, SS316L, PP, PTFE, Monel, Titanium, alloy 20				
MOC of Wire				
SS316, SS316L, SS304L, PTFE				
Process Connection - Flanged in CS				
Code	Size	Code	Code	Size
15	1/2	F	150	150#RF
20	3/4			
25	1			
40	1 1/2			
Range				
XXXX	Indicate the required range in mm.			

G A Drawing Applicable



PART LIST

S.N.	DESCRIPTION
01	GUIDE WIRE
02	FLOAT
03	GUIDE ROPE TENSION ASSBLY
04	FLOAT ROPE
05	SCALE BRACKET
06	PROTECTION LIMB
07	PULLEYS
08	FLANGE
09	ANCHOR PLATE
10	SCALE BOARD
11	POINTER
12	CONDUIT SUPPORT

