

TMLS 1000: Top Mounted direct insert mounted level switch

This is direct mounted type level switch. This provides contact changeover at a selected elevation level in the tank / vessel. Switch is mounted on top of the tank / vessel and coupled with float assembly rides on the liquid surface with rising and falling of level. The magnet attracter is connected on the isolating tube as shown in figure. As the level rises stem head of float assembly reaches upto attractor causes actuation of microswitch. To improve reliability the stem guide isolated just above the float. This type of level switch issued for lengths upto 2000mm.



Exproof IIC version for TMLS 1000



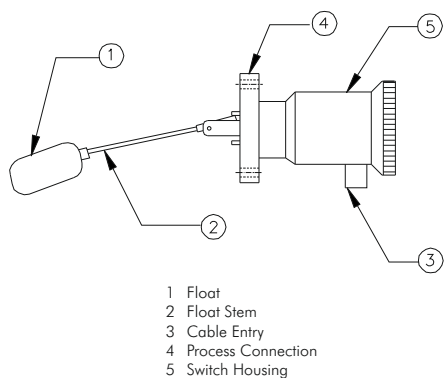
Weather proof version of top mounted TMLS 1000

Technical Specifications: Table-1 Material of Construction

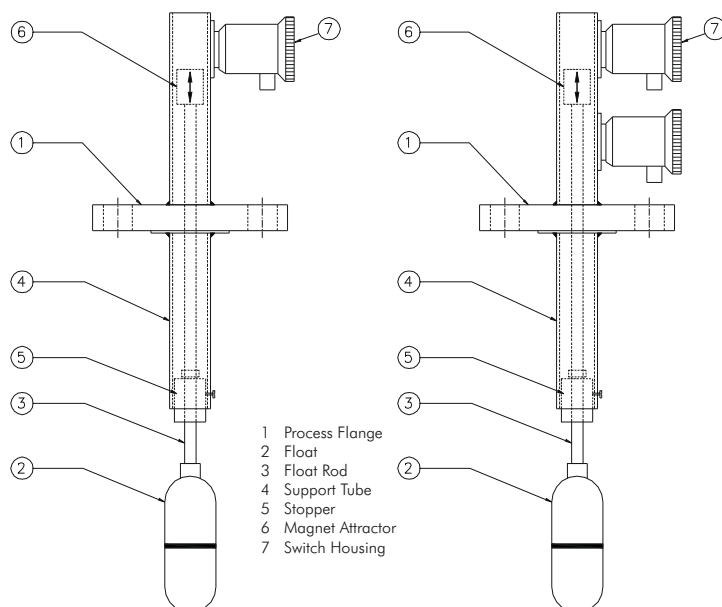
float	PTFE, PP, PVDF, SS316, SS304, SS316L, SS304L, Monel, Titanium, hastelloy
Float stem	PTFE lined SS, PP lined SS, PVDF lined SS, SS316, SS304, SS316L, SS304L, Monel, Titanium, hastelloy
Flange	PTFE, PP, PVDF, SS316, SS304, SS316L, SS304L, Monel, Titanium, cast carbon steel, hastelloy
Switch enclosure	Die cast alluminium, SS304, SS316, SS316L
Cable gland	Brass, PBS plastic, SS316, SS304, 316L

Technical Specifications: Table-2 Technical data

Float	38X200mm upto 60X160mm and upto 68X100mm
float	Specific gravity = 0.4, till 1.2
Float Stem	50mm till 150mm others on request
Flange	2" till 4", ANSI RF, FF, 125-250 AARH, DIN std DN50, 65, 80, 100, BS10TabE, socket weld, butt weld, weld neck flange in ANSI
float	Pressure design till 40 kg / 60 kg / 100 kg
Flange rating	max rating ANSI 600# and DN PN 100
Cable gland	Double compression, metal cable normal glands, 1/2" NPT F, 3/4" ET, M20, PG 13.5, PG 16
Switch	SPDT, 230 VAC, 5A or 24VDC, 0.5A
No of cable entries	Max two
Switch enclosure	IP6, IP66, IP67
Switch enclosure	EExia IICt6, EExd IIA/IIB, EExd IIC
Switch accuracy	Max upto 1%
Switch hysteresis	Max upto 0.5% to 1%
Switch repeatability	Max upto 1%
Switch certifications	CCOE, FM, ATEX, CE (versions applicability on request)
switch insertion length	Upto 2000mm for top mounted versions
Switching differential	Max Upto 5 mm, lower versions applicable
Flange	Forged, cast versions, radiography level – 1 / 2 versions available
Float weight	60gms to 200 gms depending specific gravity
Float stem weight	Max upto 18 gms depending on size / length
Flange weight	500gms till 17 kg depending float dimensions which inturn would density of
Temperature application	-100 deg cent till 350 deg cent
Pressure application	Upto 100 kg/cm ² g



Side mounted direct insert level switch



Top mounted direct insert level switch

G A Drawing for assembly and mounting

Ordering Information

SMLS/1000-50F150-S4-1S-W5-Z



Series	
SMLS/1000	Side Mounted
TMLS/1000	Top Mounted

Process Connection				
Code	Size	Code	Code	Rating
50	2"	F	150	150#RF
65	2½"			
80	3"		300	300#RF
100	4"			

MOC of Float Assembly	
S4	SS 304
S4L	SS 304L
S6	SS 316
S6L	SS 316L
M	Monel
T	Titanium
I	Inconel 600
H	Hastelloy C

Enclosure	
W5	Die Cast Aluminium Weatherproof to IP – 65
EA	Die Cast Aluminium Explosion proof suitable for Group IIA, IIB
EC	Die Cast Aluminium Explosion proof suitable for Group IIC

MicroSwitch	
1S	1 SPDT
2S	2 SPDT